

The Benefice of Harton

The Circular



Spring edition 2016
February March April

Sand Hutton Claxton Flaxton
Gate Helmsley Upper Helmsley Bossall
Buttercrambe Howsham Harton
Whitwell-on-the-Hill Crambe Foston
Barton-le-Willows Thornton-le-Clay

This edition's cover has been sponsored by

All Saints Church, Foston

If anyone is interested in sponsoring a colour page for The Circular to commemorate an event please contact the editor for more information

From The Vicarage

Dear Friends



‘Mind the Gap’

In a different life I commuted every day from Kent to London. Feeling a bit like the Reggie Perrin of old, I travelled daily from Tonbridge to Canon Street, then underground to Bank station in the City. Each morning, as the doors ‘shhhhhhhhd’ open, I alighted from the carriage to the sound of the monotonous, regular intonation:

‘Bank station: mind the gap – please mind the gap’

Gaps can be worrying things. Real gaps – that space between the edge of a platform and the step of a train - can be a chasm for lost shoes, dropped keys, fumbled tickets or worse.

And yet often the ‘gaps’ in our lives can be even more worrying if we let them.

It’s the gap between ‘where I am now’ and ‘where am I going to’ That gap between the certainty of the here and now and the uncertainty of the future can often contain fear, isolation, exclusion, bereavement, loss, grief, self-pity: all these are often more frightening and more real to some than the six inches one has to ‘mind’ at Bank Underground.

To cross that gap often needs a little courage in leaving a place of certainty, a great deal of hope as to what the destination might be and faith in that our journey will not be alone. A companion/guide, holding our hand to cross that gap and reassure us of our journey can be a God send – literally.

With Christmas over and the decorations boxed away, I’m mindful that Lent and Easter seem very early this year - just around the corner. As I thought about this I was reminded of a book I read some time ago – a very moving and powerful book in many ways – which talks of the fear of loss in a personal ‘gap’ and how the companionship/guidance of a God-sent Jesus helped and reassured him.

In his autobiographical book (*A Severe Mercy*, 1977), Sheldon Vanauken talks of the love of his wife Davy and how he came to grips with losing her to cancer, with the help of his increasing faith and his correspondence with C. S. Lewis (who soon was to face the loss of his own terminally ill wife). Vanauken found that his belief in something greater than creation itself, which provided hope and healing, helped with the fear and the pain, and was the bridge which helped him cross that gap and continue his journey.

In the book, he wrote a short, beautiful poem which, for me, illustrates our post Easter Christian faith in God quite succinctly. Belief, as you shall read, does require a 'leap' of faith. It might not be quite the small and easy step to cross like the six inch gap at Bank underground – but it is a leap that can help take away fear and loss. It just takes a little courage to take that first step.

The Gap

*Did Jesus live? And did he really say
The burning words that banish mortal fear?
And are they true? Just this is central, here
The Church must stand or fall. It's Christ we weigh.*

*All else is off the point: the Flood, the Day
Of Eden, or the Virgin Birth--Have done!
The Question is, did God send us the Son
Incarnate crying Love! Love is the Way!*

*Between the probable and proved there yawns
A gap. Afraid to jump, we stand absurd,
Then see behind us sink the ground, and worse,
Our very standpoint crumbling. Desperate dawns
Our only hope: to leap into the Word
That opens up the shuttered universe.*

Yours in Christ

Revd Chris Wingfield

Services for the Benefice of Harton

February 2016

Wednesday 3rd February

10.00	Holy Communion	Whitwell
-------	----------------	----------

<i>Sunday 7th February</i>	<i>Sunday next before Lent</i>
--	---------------------------------------

10.30	Holy Communion	Crambe
10.30	Holy Communion	Sand Hutton
10.30	Family Holy Communion	Flaxton

Wednesday 10th February

7.30	Holy Communion	Ash Wednesday Gate Helmsley
------	----------------	---------------------------------------

<i>Sunday 14th February</i>	<i>Lent 1</i>
---	----------------------

10.30	Benefice Holy Communion	Buttercrambe
-------	-------------------------	--------------

Wednesday 17th February

10.00	Holy Communion	Howsham
-------	----------------	---------

<i>Sunday 21st February</i>	<i>Lent 2</i>
---	----------------------

9.00	Holy Communion	Gate Helmsley
10.30	Holy Communion	Flaxton
10.30	Holy Communion	Bossall

Wednesday 24th February

10.00	Holy Communion	Crambe
-------	----------------	--------

<i>Sunday 28th February</i>	<i>Lent 3</i>
---	----------------------

10.30	Benefice Holy Communion	Whitwell
-------	-------------------------	----------

March 2016

Wednesday 2nd March

10.00

Holy Communion

St David

Gate Helmsley

Sunday 6th March

Mothering Sunday

10.30

Family Service

Flaxton

10.30

Family Holy Communion

Bossall

Wednesday 9th March

10.00

Holy Communion

Whitwell

Sunday 13th March

Lent 5

9.00

Holy Communion

Sand Hutton

10.30

Holy Communion

Crambe

10.30

Holy Communion

Foston

Wednesday 16th March

10.00

Holy Communion

St Patrick

Flaxton

Sunday 20th March

Palm Sunday

10.30

Benefice Holy Communion

Upper Helmsley

Thursday 24th March

7.30

Maundy Holy Communion

Maundy Thursday

Gate Helmsley

Friday 25th March

10.00

Devotion

Good Friday

Foston

2.00

An Hour at the Cross

Sand Hutton

Sunday 27th March

Easter Day

10.30

Benefice Holy Communion

Howsham



Please note the clocks go forward today!

Wednesday 30th March

10.00

Holy communion

Buttercrambe

April 2016

<i>Sunday 3rd April</i>		<i>Easter 2</i>
---	--	------------------------

9.00	BCP Holy Communion	Gate Helmsley
10.30	Holy Communion	Foston
10.30	Holy Communion	Sand Hutton

Wednesday 6th April		Annunciation
10.00	Holy Communion	Whitwell

<i>Sunday 10th April</i>		<i>Easter 3</i>
--	--	------------------------

10.30	Benefice Holy Communion	Bossall
-------	-------------------------	---------

Wednesday 13th April		
10.00	Holy Communion	Howsham

<i>Sunday 17th April</i>		<i>Easter 4</i>
--	--	------------------------

10.30	Holy Communion	Upper Helmsley
10.30	Holy Communion	Buttercrambe
10.30	Holy Communion	Flaxton
6.00	BCP Evensong	Crambe

Wednesday 20th April		
10.00	Holy Communion	Sand Hutton

<i>Sunday 24th April</i>		<i>St George</i>
--	--	-------------------------

10.30	Benefice Holy Communion	Whitwell
-------	-------------------------	----------

Wednesday 27th April		<i>St Mark</i>
10.00	Holy Communion	Crambe

May 2016

<i>Sunday 1st May</i>		<i>Easter 6</i>
---	--	------------------------

10.30	Benefice Holy Communion	Foston
-------	-------------------------	--------



Welcome to those newly baptised

13th December 2015

Akito Caspar Brown

Foston

20th December 2015

Annabel Rachel Jordan

Flaxton



Our belated condolences to the families and friends of

4th November 2015

Brian Wilcox

Bossall

6th November 2015

Christopher Storm- Clark

Bossall

15th November 2015

Cyril Barton

Gate Helmsley

November 2015

Josie Jackson

Flaxton

22nd December 2015

Derick Batty

Crambe

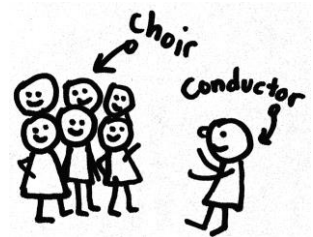
9th January 2016

Iris Green

Gate Helmsley

The Benefice Choir

**Tenors and Basses still urgently needed!
Can you help?**



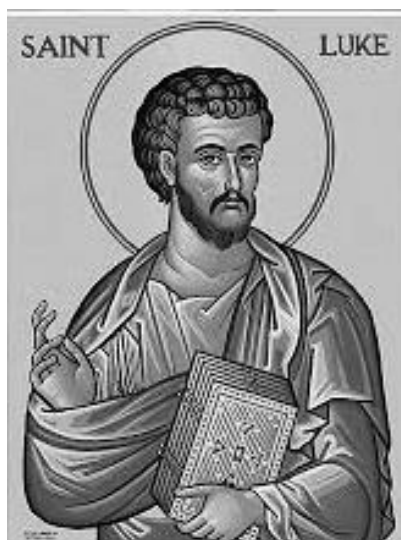
The Benefice Choir sings at the regular Benefice services and other special services. Our repertoire includes hymn settings, anthems, responses, Magnificat, Nunc Dimittis etc.

**We rehearse on a Thursday evening, generally twice a month,
from 7pm - 8pm at St Mary's Church, Sand Hutton.**

We thank choir members for their regular support and contribution.

**For more information please contact Peter Stott: 01904 468404
or Email - petermstott@yahoo.co.uk**

Lent Course – Stop, Luke and Listen!



A series of four evenings during Lent taking a fresh and contemporary look at the Gospel of St Luke

Discover what makes Luke's story of Jesus and the early church different from the other Gospels – you might be quite surprised!

There will be teaching to inform, questions to explore and discussions to share views and reflect on.

And with all of this there will be refreshments and some contemporary closing worship.

**So do come along and 'Stop, Luke and Listen!'
with Revd Chris Wingfield**

7.00pm to 9.00pm at St Mary's, Sand Hutton

Tuesday 16th Feb

Tuesday 23rd Feb

Tuesday 1st March

Tuesday 8th March

LENT LUNCHES

***Come and join us for a simple lunch
at the following homes***

Always a happy social event!

Thursday February 18th

Pam Ashworth, The Rullies, 6 Village Farm, Foston

Thursday March 3rd

Rachel Benson, Grange Farm, Westow

Friday March 18th

Michael & Delyth Harran, Orchard House, Gate Helmsley.



All lunches will take place between 12.30 p.m. – 2.00 p.m.

All donations will be given to The York Blind & Partially Sighted Society.

Remember these?!!



The shoebox mountain in Bossall Church

Post- script on the AMEN Christmas shoe boxes

Chris Lemming, who organised the AMEN charity's collection of Christmas shoe boxes, has sent us grateful thanks for the contributions made by this benefice to the national project to support poor families in Romania. He has also given some amazing statistics which illustrate the vast size of this enterprise. This is what was sent from around the country:

2007 shoe boxes

40 large boxes of warm clothing

A similar number of boxes of clothes for babies

A similar number of bags of blankets

Enough furniture for a 5-bedroom orphanage

Washing machines, tumble driers and a shower to provide washing facilities for one village where AMEN had donated money for a well and a pump

**Some preliminary pictures can be seen at
www.holmechristianfellowship.org/video.htm**

**Thank you once again to
David Fletcher and Christine Watson
who co-ordinated the local collection of boxes.**

SAND HUTTON AND CLAXTON VILLAGE HALL

Forthcoming Events

“Synolda Arms”

Our famous pop-up pub, is opening again on **Friday 11th March**. We are delighted to welcome a local band, “Beatlesque”, playing (you guessed it) music from the 60s.

Pop in for a pint and a chat, and maybe a bop!
Open from 7pm; drinks; snacks; last orders 11pm

Spring Saturday Social

jointly hosted with our Parish Council, the next occasion of this regular gathering for all things local will take place on

Saturday 9th April 10.30 am – 12.30 pm.

Village Produce Show:

we are working again in collaboration with the team from Barton who hosted the Show last year, with plans now afoot for the return of the Show this year to Sand Hutton on

Saturday 3rd September
Save the date!

Meanwhile, all our usual clubs are running throughout the winter:

- Indoor Bowls
- Knit and Natter
- Tai Chi
- Women in Harmony
- W.I.

and the Community Library is open every Monday morning 10 am – 12 for books, chat and coffee

NB: We are now providing a facility for recycling plastic plant pots; the collection point is the wire cage on the side of the Hall’s storage shed – please leave any unwanted pots there. They will be washed, sterilized and used for the Sand Hutton Plant Fair 2017 – find out more at the Saturday Social!

Claxton and Sand Hutton Parish Council



**We are taking part in the “Clean for The Queen”
a campaign to clear up Britain in time for
Her Majesty the Queen's 90th birthday,
which will be officially celebrated in June 2016.**

When she came to the throne litter was not the problem that it is today. Food packaging, plastic bottles, takeaway meals and cigarette butts have all contributed to a growing menace that affects our wildlife, streets, countryside and sense of pride.

What better way could we show our gratitude to Her Majesty than to clean up our country?

Come and join us for a Litter-pick

Round Sand Hutton and Claxton
on Saturday March 5th
at 10.00 a.m.
meet at the Village Hall



This coincides with the official campaign weekend

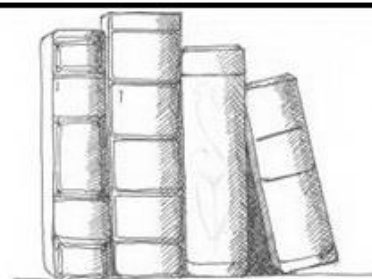
Saturday 9th April 10.30 am – 12.30 pm: Spring Saturday Social,
jointly hosted by the Village Hall.

Free coffee and cakes.

Stalls to include:

- Launch of Village Show: collect your seeds for the Growing Challenge
- Plant sale
- Display for Sand Hutton Plant Fair, scheduled for June 2017; come and meet the organisers
- Fairtrade products from Fairer World
- W.I. cake stall
- Knit and Natter
- Book sale and Jigsaw swap

BOOKS BOOKS BOOKS



Gate Helmsley Village Hall

Our small library will be open on

Saturday 13th February

10am till 12 noon

please come and browse there will be tea and biscuits available

Hopefully we will open on the second Saturday in every month

For further details please phone Chris Tel: 01759 371 687

Flaxton Village Hall

Annual Pancake Party!



Come and join us for fun and fellowship

on

Shrove Tuesday 9th February

at 6.30 p.m.

Everyone is welcome!



St Michael's Church, Crambe



SPRING COFFEE MORNING

Saturday 19th March

at Barton Le Willows Village Hall 10.00 a.m.—12.00 noon

Bring your friends!

Cake * Raffle * Bottle Tombola

Entrance £2.00 children free, includes light refreshments

Gifts of cakes, bottles, and raffle prizes are most welcome,
they can be brought on the day or given to any member of PCC.

Contact Dorothy Tel: 01653 619133

Gate Helmsley Village Hall

Saturday 12th March 7.30 p.m.

Dancing to

NORTHERN ROCK

Two course supper please bring your own drinks

Glasses provided

Raffle.

Tickets £10 pp

Available from Mandy 01759371148

or Chris 01759371687



St. Mary's Church, Sand Hutton, Tower Fund Appeal

SUPERSINGERS CHOIR

A York based choir with a varied repertoire

**Friday
April 15th at
7.30pm**



**Including
Les Miserables,
Benedictus, Pachebel's
Canon, The Beatles,
and much more!**

Tickets: adults £8 to include glass of wine with refreshments

Age 16 and under £5

For tickets please contact Ellen Stott Tel: 01904 468404

or Rachel Baker Tel: 01904 468809



DO YOU LIKE FLOWERS?



The Viking Flower Club is a small friendly group meeting on the third Tuesday of each month in Stamford Bridge Village Hall.

We have a varied and interesting programme throughout the year with demonstrations; workshops; talks; a summer garden visit and an annual dinner.

To find out more why not come along to our AGM and social evening?

7.30pm Tuesday 16th February in Stamford Bridge Village Hall

New members are always welcome.

"In battle after battle, thousands died for gains measured in yards. On the Somme, on July 1, 1916, the British army suffered the single worst day in its long and pugnacious history, losing 60,000 men ... Most were gone in the first hours of a massive frontal attack that saw men climb out of the trenches and march, shoulder-to-shoulder, into the sights of chattering machine-guns which cut them down like standing hay."

**In Memoriam
July 1st 2016
100th Anniversary of
The Battle of the Somme**



**This terrible event is to be marked this year by the nation's
2nd Day of Remembrance of the First World War.**

All communities were affected by the terrible loss, and here in our villages we might wish to recognise this Day of Remembrance.

If you feel the same way and would like to help us mark the day, please contact either Caroline Hall 468376 or Allen Warren 468649.



Royal British Legion 2015 Poppy Appeal.

Many thanks to all those people who sold poppies for the 2015 appeal in the Benefice of Harton area. Thanks also go to the many businesses who kindly agreed to have a collection box on their counters.

The total raised was £2288.32.



If anyone is interested in helping out with the 2016 Poppy Appeal,
I still have a couple of villages with no official Poppy Seller.

Volunteers would be greatly appreciated.

From the Benefice PCC.....

The next meeting of the Benefice PCC will be held at Wood House, Thornton le Clay, at 7.30 pm on Thursday 28th January. Details will be reported in the next edition of the Circular. Please remember that any agenda items for the Benefice PCC may be sent to the honorary secretary, Wendy Holman, or to the Rector.

Around the Parishes.....

News views and information from:

BOSSALL

Services at Bossall have been well supported not only as regards the regular services but also Remembrance Day, 2 funerals and the well prepared, thoughtful and much enjoyed Christmas services. Good attendances do bring their own problems when recent weather combined with car parking causes damage to the grass verges which - sadly - cannot be avoided.

Much favourable comment has been made about the stone walling to the left of the lych-gate and we are hoping to be able to raise funds to extend this walling to the right of the lych-gate. This would then present a most impressive picture of our ancient church.

Lastly, we are fortunate that Jacqui Chainey has agreed to succeed Teddy Denison as Honorary Treasurer and bring her skills to the accounting procedures required by the Diocese, particularly with regard to the amalgamation of accounts for our combined parish of Bossall with Buttercrambe and Howsham.

CRAMBE

Happy New Year to you all

The Autumn has been a mixture of warm and wet. Spring flowers are already flowering, particularly the primroses.

There have been normal monthly communions, followed by coffee and biscuits at Crambe House and Ryder's Corner thanks to all concerned.

The highlight of the three months had to be the Carol Service, again organised by Fiona Le Masurier. Music was provided by The York Railway Institute Brass Band and the soloist was soprano Caroline Hall. Fortunately the weather was mild as the new heating system could not be installed before Christmas! However, it will definitely be in place for next year. It was followed by mulled wine, mince pies and much more at Kyreham House. Many thanks to Bobby and her helpers.

The sad news was the death of Derick Batty just before Christmas. Derick had lived in Crambe for sixty years. Stopping to chat with him whilst he was walking Max the Yorkshire terrier round the village will be much missed by everyone. He was the best neighbourhood watch any village could have.

The funeral, taken by Revd Chris Wingfield was held at St John's church, Whitwell. It was very well attended, with people from Crambe and nearby villages together with friends and family. A great tribute to a much respected man.

Our deepest sympathies are extended to Katherine, his wife, and to his sons Stephen and David.

FLAXTON

The children of the Sunday School once again did a fantastic job of relaying the nativity story in verse and song. Mums and grandpas did a splendid job of promoting Sunday School to friends and as a result we ended up with 12 children taking part, some of whom don't live locally and we extend a special thanks to them. We had an excellent response for the gift of toys to pass on to the Salvation Army for the Christmas toy appeal. Major Andrew Dunkinson from the Salvation Army has sent heartfelt thanks to everyone who gave. They were able to provide 220 food parcels and 557 children received toys and other gifts.

This year the Salvation Army have made a promotional video and you can view this on <https://youtube/BDcISUZQ9uc>.

The service closed with all the children receiving a Sunday School prize. There were over 60 in the congregation and following the service we enjoyed refreshments and fellowship.

**The Sunday School is open to all children of any denomination
For more information please call Ida on 01347 878432.**

In the same week we had our **service of Nine Lessons and Carols** strongly supported by the Flaxton singers. Thank you to Dick and the singers for all their hard work and to Geoff for playing the organ. A special thank you and well done to all the readers. Thanks to Wendy and John for providing the mulled wine and to all who provided mince pies. It was very uplifting to have the church full and the up side to that was that people were having to take their coats off because they were so warm which must be a first in Flaxton!

On 20th December 2015 we welcomed Annabel Rachel Jordan into the family of the church when she was christened. Annabel is the granddaughter of Alison and Jeff Jordan. We send our love and wish you a very happy and healthy life Annabel.

The PCC members are now thinking about fund raising events during 2016. So far we have a jumble sale in early March; two St Crux events, one in April and the other in September; and the Garden Fête in June.

There will be the traditional Pancake Party in Flaxton Village Hall on Shrove Tuesday 9th February starting at 6.30pm. A warm invitation is extended to

everyone. This event is not a fund raiser but an opportunity for us all to get together for some fun.

We look forward to welcoming you to any of the above events.

Last November we were saddened to lose a very valued and stalwart member of the village - Josie Jackson. The church was full of Josie's family and friends and our thoughts are with them.

GATE HELMSLEY

We enjoyed some excellent Christmas celebrations in Gate Helmsley last month. Now it's back to normal routines as we welcome the beginning of another year. We got into the Christmas spirit on Saturday 5th December with the annual Christmas Fayre held at Orchard House. We spent a convivial afternoon enjoying mince pies and mulled wine and raised a very welcome £720 for church funds. Thank you to everyone who helped and to all those who attended this event.

The following Saturday, 12th December, villagers met at noon in St Mary's Church for an hour's carol singing. In the absence of Sister Margaret Ann through illness, we were pleased to welcome the Rector, Reverend Chris Wingfield, who helped the children set up the Christmas crib. He told them a story about a church stained glass window which was damaged so that the inscription on it was changed from "GLORY TO GOD IN THE HIGHEST" to "GLORY TO GOD IN THE HIGH ST" – a neat encapsulation of the Christmas message. Benjamin, Isla and Nina gave a wonderful rendition of a Christmas song they had learned at school. We all met up afterwards at the Duke of York for a buffet lunch courtesy of the village Jubilee Committee, to whom we offer thanks. We welcome the new proprietors and staff who have recently taken over the Duke of York, and thank them for their continuing support of local events.

Reverend Jeremy Valentine led a Christmas morning service at St Mary's Church. The church was again full of people – and of Christmas joy. We trust that no Christmas turkeys were burned that morning as many stayed on to socialise after the service, enjoying a mince pie and a cuppa.

Sadly we have to report the death of a former parishioner, Cyril Barton on 15th November aged 94. Although Cyril and his wife, Connie, lived in Dunnington in the recent past, they previously lived for many years at

Panmure House in Gate Helmsley. Cyril and Connie had almost reached their 70th wedding anniversary – quite an achievement. The funeral was held at St Mary's Church, the collection shared between Yorkshire Air Ambulance and the church. We send our sympathy to the family in their loss.

We look forward to two forthcoming village events. The annual parish lunch on 24th January will be held as this goes to press. The Village Hall Committee has arranged a spring dance on Saturday 12th March; see the separate notice for details.

One of the three forthcoming Lent lunches will be held at Orchard House, 12.30 to 2.00 pm on Friday 18th March. Details of the Lent lunches are in another part of this Circular.

A Happy New Year to everyone.

Post script: Sadly we must keep St Mary's Church locked for the foreseeable future. This is because of persistent petty thieving, including theft of the communion wine, the teapot and the altar flowers - a very petty act indeed.

“Pipe Up!”

St Mary's, Gate Helmsley Centenary Organ Restoration Fund

There is little to report since the last Circular. We still await a date for the restoration work to begin – but we expect to hear soon! The organ creaked along over the Christmas period and we are fortunate that the wet weather has not caused further problems.

Although we have just about reached our original target, we need to raise a little more to cover unforeseen contingencies – so you can still help by sponsoring one or more pipes or by just making a donation.

For more information about the history of the organ, the restoration plans or to make a donation, contact Michael Harran – 01759 372215 or mj@mharran.freeseve.co.uk

Dick Garnons Williams, Michael Harran, Andrew Podmore

HOWSHAM

The cake stall and raffle at York Auction Centre Christmas show went very well, raising £375 for church funds. Many thanks to all who contributed.

A full church enjoyed a lovely carol service led by Chris, with contributions from the village and a delightful solo by Gilly Glew of Foston. The church was beautifully decorated thanks to all who helped.

Unfortunately, yet another section of the Church boundary wall has collapsed. If anyone has any cash left after Christmas, we would welcome any contributions to the repairs.

The Easter Sunday Benefice service, with the Benefice choir, will be at St John's Howsham on March 27th at 10.30am. Before that on Sunday 31st January the Holy Communion is also at Howsham.

Advance notice the annual bank holiday cake stall on the bridge will be at 10.30am Monday 2nd May.

SAND HUTTON and CLAXTON

Since the last edition of the Circular there have been a few changes in our two villages with some of our neighbours moving away and therefore new ones arriving! We would like to take this opportunity to welcome our new neighbours and look forward to seeing you at some of our village events enabling us to get to know one another.

St. Mary's Parochial Church Council express their gratitude and thanks for all the hard work done again by those who have worked behind the scenes to keep the church and the grounds in good order. Also thank you to those who have been involved in fundraising during the last 3 months.

'Gifts for Christmas' raised £2,291.33

Rosie Miers and helpers will already be thinking about 2016 Gifts for Christmas !

Dot and Bryan's 'Quiz Night' not only raised £401 but also a lot of fun and laughter so hopefully you will be able to join us in the Autumn as the next one is being prepared now!

The Carol Service, with the Amici Singers, was again a very special time when we were able not just to enjoy the music but to quietly reflect on the true meaning of the Advent Season as we looked forward to the coming of the Christchild.

The Crib and Christingle Service



was enjoyed by many and the children (and adults!) had fun making their Christingles during the talk. We did, however, bring to mind the many, many people throughout our world who live in real poverty and especially the refugees who are suffering

at this time. **A collection of £201.86 was sent to the work of The Church of England Children's Society** to help support vulnerable children in the U.K.



Esther Edwards

A big thankyou to all of you who supported these events and gave generously.

During 2015 it was agreed by the P.C.C. to financially support 2 charities, Ryedale Special Families being the local charity, and Tehila Trust being the overseas charity working in Zambia. £500 will be given to each.

For 2016 the local charity will be the York Blind and Partially Sighted Society. The overseas charity is still to be decided upon.

There will be a display in the church for those who are interested.



The traditional carol singing around Claxton raised £200.20 for Macmillan Cancer Support. Many thanks go to the generous residents and the enthusiastic singers.

ST MARY'S CHURCH, SAND HUTTON TOWER AND SPIRE RESTORATION PROJECT



The platform hoist outside St Mary's



A bird's eye view of the spire and roof

We are happy to report that the development stage works are progressing well. St Mary's was a hive of activity on December 16th with investigations of the Tower and Spire via a platform hoist, rectified photography, stone sampling, internal investigations and drainage exploration. At the beginning of January an asbestos survey and glazing survey were undertaken. We now await various reports.

Plans for the design of a kitchenette and toilet are in their early stages and we hope to discuss these with the architect in the near future. All of this work will inform our second-round application to the Heritage Lottery Fund for a further grant towards the delivery phase and capital costs.

We would like to thank all those who share our vision to preserve the heritage and place in the community of this special building and who continue to generously support our fundraising. It is much appreciated. Thanks also go to Bill Heath who has agreed to chronicle progress in photographic form.

**If you would like more information
or wish to make a donation please contact:
Ellen Stott 01904 468404 or Graham Baker 01904 468809**

News from our schools.....

SAND HUTTON C of E PRIMARY SCHOOL



As a Church of England Primary School Sand Hutton receives regular inspections under the framework of Statutory Inspection of Anglican and Methodist Schools (SIAMS). The principle objective of SIAMS inspection is to evaluate the distinctiveness and effectiveness of the school as a church school. In November the school was

inspected by Mrs Linda Dixon and I am pleased to say that the final judgement was 'Outstanding'.

The report states:

'this school promotes a distinctive vision rooted in Christian values. Expectations for the best possible education and wellbeing for all within a Christian environment are passionately expressed.

Through its nurturing ethos, leaders ensure that this is a highly effective school, which promotes children's spiritual development and high academic achievement.'

'all children feel loved, respected and valued in this safe, secure Christian school community. This creates an extremely positive climate for

learning so that all children achieve at least their expected levels of attainment and many beyond.'



Classroom display by the children

The full report is available on the school's website

www.sandhutton.n-yorks.sch.uk

I would like to congratulate all children and staff – needless to say everyone was delighted with the result. Thank you to governors and parents who support us in what we do – very much a team effort. Also, we deeply appreciate the love, care and support given by Sister Margaret Ann, Revd. Chris Wingfield and the wider church family.

FOSTON C of E PRIMARY SCHOOL



A fantastic start to the year for Foston CE Primary School with a visit from Ofsted which recognised the good work the school does for all our children.

Foston is an “inclusive school with aspirational expectations for all pupils, regardless of their starting points. Parents confirm that the school is a caring and welcoming place to send their children.”

The following strengths were also identified – our EYFS KS1 provision and teaching, behaviour of our children, social, moral, spiritual and cultural development in line with our Christian Ethos.

To read the full report please visit the Ofsted website.

Our recent Christmas performance was fantastic with involvement by all children from nursery to Year 6. The children performed Little Red Riding Hood in Fairyland. A fantastic turnout for both performances made the day a very special one for our talented young actors and actresses.



The children in both KS1 and KS2 are undertaking a topic called “What is it made of?” Both classes will be looking at materials in science and EYFS KS1 will be learning about the Great Fire of London whilst the Juniors will be researching the Vikings.

**Our nursery provision for 3 year olds
is going from strength to strength**

with six children now on roll for varying hours, we offer a range of hours from three free hours to aid transition to full time school hours for the allocated free funding for pre-school children.

Please contact us for more information on (01653) 618265.

**We also offer before and after school provision from 8 am to 5.30 pm
for all children at very competitive rates**

Yorkshire Historic Churches Trust

– helping churches most in need.



www.yhct.org.uk
Reg Charity No. 700639



Yorkshire is a county famed for its heritage, and is home to over 2500 churches, chapels and meeting houses. From tiny chapels and village churches, to commanding Minsters, these magnificent and much loved buildings define our landscape, bring together communities and demonstrate beautiful craftsmanship.

They offer congregations a welcoming, warm and friendly place to worship, host a wide range of social groups and offer facilities for local communities across the region.

However, as most of them are at least one hundred years old, these places of worship need preservation and maintenance so that they can remain a centre of local life and a reminder of our great Christian heritage.

The Yorkshire Historic Churches Trust was set up in 1988, with the aim to help repair, preserve and maintain the region's most precious churches, chapels and meeting houses.

We rely on the donations of friends, trusts and members of the business community to help us with the never ending task of caring for our precious places of worship.

This year, thanks to the generosity of those friends, trusts and members, we have been able to award over £100,000 to 25 churches in need across Yorkshire.

By becoming a Friend, or making a donation, you can help us to fund urgent repairs to churches just like yours, and to ensure they can continue to offer a welcoming place to worship. You will also be joining a group of people who share your love of Yorkshire's churches.

Membership is just £25 for the year

and Friends enjoy a wide range of benefits, including invitations to a variety of church tours, lectures and social events, our bi-annual Friends newsletters and a copy of our Annual Review.

For details of how to join or donate, see www.yhct.org.uk/friends/

Call Vanessa White Tel: 07786 656883

Email: vanbarassociates@gmail.com

Is this relevant to the Benefice of Harton?

Yes it is!



*St Mary's Church
Gate Helmsley*



*St Michael's Church
Crambe*

A number of churches within the Benefice of Harton
have been helped to fund their projects by the
Yorkshire Historic Churches Trust
including St Michael's, Crambe and St Mary's, Gate Helmsley

It exists for your benefit!

You can help to ensure the future of our local churches by encouraging your church PCC to become a Friend of YHCT with all the benefits that brings.

You never know when you may need their help!

As an introduction to what I hope to be a regular update in the Church Circular a little bit of history on the hidden gem of our Parish, Howsham Mill.

In 2003 Howsham Mill was a ruin hidden in the trees on a small island in the River Derwent, five miles downstream from Malton. The vision of the newly-formed Renewable Heritage Trust was to restore the building back to its Georgian Gothic glory with a new use as an environmental education centre, generating hydro-electricity from the waterwheel and the first Archimedes screw turbine installed in the UK. In 2006 the mill was the northern region finalist on the BBC Restoration Village programme. A Rural Enterprise Scheme grant funded the rebuilding in 2007 of the granary to become the kitchen and house electrical equipment.

Early in 2007 the complicated process of installing the 9.5 t Archimedes screw started. Electricity is generated from the screw and waterwheel and in February 2010 the mill was connected to the National Grid and the surplus could be sold. RHT was awarded a grant from the Heritage Lottery Fund with match funding from the Country Houses Foundation to restore the main part of the building. In June 2012, the local company Stephen Pickering Ltd and sub-contractors, started work.



A year later, after four floods and very difficult working conditions, the building was restored to its former glory, as it was when abandoned in 1947. The quality of the workmanship is a tribute to all those involved. The mill now employs an education officer and is well used by local schools for outdoor and science related activities. Many craft and social events are also held at the mill.

Howsham Mill is opened every Sunday by volunteers and trustees who would love to share their knowledge of this beautiful piece of history.

Please call in to see us and find out more or visit our website at www.howshammill.org.uk



CAKES FOR ALL OCCASIONS

Delicious homemade cakes whatever the occasion!

Gluten free cakes
also available.



Contact me to discuss
your requirements.

Cakes available include
fruit cakes, sponge cakes, cupcakes, tray bakes,
children's birthday cakes, seasonal specialities and many more.



Jane Bass
07843 024049
cakesforalloccasions@sky.com



17 years old. Vulnerable. Homeless.

SASH helps young people at a time of crisis.

We prevent vulnerable young people from becoming homeless
by offering them a room in a volunteer's home.

This valuable 'Nightstop' service relies on community support.

Can you help?

Fundraise. Donate. Support.



**Preventing
Youth
Homelessness
Together**

Contact us to find out more.
01904 652043

www.sash-uk.org.uk

Safe and Sound Homes (SASH)
Registered Charity No. 1054890



**BED AND BREAKFAST
ORCHARD ROSE COTTAGE
HARTON
YORK YO60 7NP**



beautiful rural location
dog friendly

contact: Janet Botterill
Tel: 01904 468 323
Mobile 07803 601 161

email: janet.botterill@googlemail.com visit www.accommodation-yorkshire.com

Harton is only 8 miles east of York, 1 mile from the A64
close to Castle Howard, the East coast, and many more beautiful locations
well behaved dogs welcome!
evening meals by arrangement

Flaxton Village Nursery

Give your child the best possible start in life

REGISTERED FOR
FULL DAY CARE
Birth –5 years



For details contact Mrs J Connor
Tel: 01904 468888 Daytime
Email: flaxtonnursery@yahoo.com
Website:
www.flaxtonnursery.wetpaint.com

**Draft Farm, Flaxton
York YO60 7QP**

Open 8a.m.—6 p.m.
OFSTED Inspected

- ♦ Funding available for 3 & 4 year olds
 - ♦ Extensive outdoor play areas
- ♦ Separate baby, toddler, pre-school rooms
- ♦ Located in a small village just off A64 between York and Malton 3 miles from Strensall

You may have to work in the city or on an industrial site but for the well-being of your child, a few extra miles means a pollution free environment.

If you are looking for a special nursery, please come and visit us

Do you need a Dentist?

General & Family Dentistry

Cosmetic Dentistry

Dental Sedation

Dental Implants

Dentures

Facial Aesthetics

Crystal Clear Dental York

25 Blake Street, York YO1 8QJ

Tel: 01904 642595

Email: info@crystalcleardental.co.uk
crystalcleardental.co.uk

Haxby Family Dental Practice

9 The Village, Haxby, YO32 3HS

Tel: 01904 762757

Email: haxby@crystalcleardental.co.uk
haxbydentists.com

Emergency appointments available

Practice Membership starting from

less than £2 per week

Various plans to suit all of the family

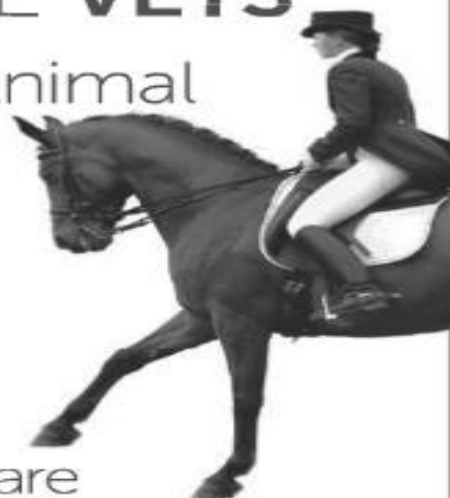


crystalcleardental.co.uk



STATION HOUSE **VETS**

Equine & Small Animal



Expect the best care
everytime




01653 618303

24 hour emergency

Just off the A64 in Welburn near Castle Howard

www.stationhousevets.com

Your Local Pet Care Service **Genuine animal lover offering professional pet care** **According to individual needs**

-  Regular or occasional dog walks
-  Small animal feeding
-  Complete care whilst owners are away

Helen Blakeway
Finlandia, Stockton-on-the-Forest
York YO32 9UL
Tel: 01904 400582 Mob: 07990 985137
Email: blakeway65@aol.com

References available
Established 2007 Fully insured



RYEDALE PHYSIOTHERAPY

Ed Jowitt LCSP(phys)

Don't put up with back pain!

Physiotherapy can help with

BACK PAIN

NECK AND SHOULDER PAIN

HEADACHE

SPORTS INJURIES

MUSCLE OR JOINT PROBLEMS

ARTHRITIS AND RHEUMATISM

Established 1996

18A THE MARKET PLACE

MALTON

TEL: 01653 690808

fionawoollons
physiotherapy



**Physiotherapy
with
acupuncture treatment
also available**

**recognised by
private health companies**

for friendly advice and an appointment

tel: 07951 137 814

online at www.fionawoollons.com

email: fiona@fionawoollons.com

Fiona Woollons MCSP HPC AACP

Foston House, Foston, York, YO60 7QG

Graham Hill

Painter & Decorator

The Byre

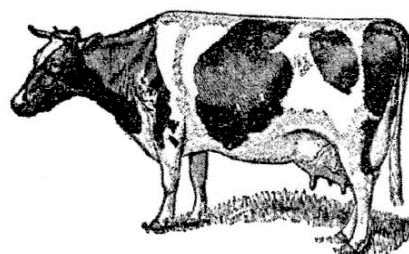
Field House Farm

Thornton-le-Clay

York YO60 7QA

Tel: 01904 468773

Over 25 years experience



IAN WALTERS LTD

DAIRYMAN & NEWSAGENT

FRESH BRITISH MILK

DAIRY PRODUCTS

FRESH EGGS

ALL DAILY NEWSPAPERS

DELIVERED TO YOUR DOOR

TEL: 01904 468281



Meila

Hairdressing

For Ladies and
Gentlemen

01904 676119

60 Brockfield Park Drive
Huntington
YO31 9ER

Last Wishes

FUNERALS

*Simple, innovative
and caring funeral services*

Giving you space and time to choose

Your wishes matter

Contact

Christine Dudzinska

01653 627170 / 07824 639 244

www.lastwishesfunerals.co.uk



jwpcreeers llp

CHARTERED ACCOUNTANTS

20-24 Park Street
Selby, North Yorkshire
YO8 4PW
Tel: 01757 703731
Fax: 01757 210358

Genesis 5
Church Lane
Heslington, York YO1 0 5DQ
Tel: 01904 717260
Fax: 01904 438913

www.jwpcreeers.co.uk

- **Accounting and Bookkeeping**
- **Audit & Assurance**
- **Charities**
- **Corporate Finance**
- **Medical Practices**
- **Payroll**
- **Taxation**

WANT TO ADVERTISE? PUT YOUR BUSINESS HERE

this space is £50
for four editions of

'The Circular'

reaches over 1000
homes and businesses

each quarter
full page is £100
1/2 page is £75

if you are interested
contact the editor
Fiona Le Masurier

email: churchmouse@crambe.net
for further information

Iveson Computer Services

Established 24 Years.



New and used computers supplied.

Wi-Fi and Wired Networks installed.

Problems with Spyware or Virus's Cured.

Software problems rectified.

Damaged Laptop Screens replaced.

Personal files protected prior to any work carried out.

Please call Derek Iveson I.T. Engineer.

Telephone 01904 744437 Mobile 07904033069

Appleton Roebuck York



MATTHEW MIERS

YOUR LOCAL ENERGY SPECIALIST



For:

Wood burning stoves and multi fuel stoves

Open fires and fireplace construction

Chimney cowls, lining and restoration

Ground source heat pumps

Under floor heating

Central heating power flushing

"It's service that counts"

01904 234073

07950041665

www.yorkshireenergysolutions.co.uk

matthew@yorkshireenergysolutions.co.uk



**kensa
heatpumps**

HOWSHAM LOGS

SEASONED LOGS FOR SALE

Stove special mixed logs

£50 per dumpy bag or £95 for 2

Hardwood logs £60 per dumpy bag or £115 for 2

Dumpy bags hold approximately 0.65 m³ of split logs.

All logs are from trees on the farm

No delivery charges within the parish

Discounts available for larger loads or green logs

Call Tom Stephenson on 07801 685 671

Email: tomstephenson100@hotmail.com or visit www.howshamlogs.co.uk

All prices are inclusive of VAT at the 5% fuel rate



Danielle Hargreaves
Gardener

**Reliable, polite and flexible
professional garden service.**

Specialising in shrub and herbaceous border
maintenance and re-design.

Rose pruning and training.

Planting advice, plant selection and supply.

**Truly passionate about plants, helping clients
to create beautiful and interesting gardens.**

BSc, RHS Qualified

*Trained with Royal Botanic Garden Edinburgh
and Askham Bryan College*

Email: danielle.hargreaves@gmail.com

Tel: 01653 658667



BRIAN FARRER

VILLAGE FARM
HIGH STREET
THORNTON-LE-CLAY
YORK
YO60 7TE



GARDEN MACHINERY SERVICE AND REPAIRS. NEW AND USED MACHINE SALES

TEL: 01653 618810

MOB: 07713349240

E-mail: diane@villagefarm45.fsnet.co.uk



Stephenson Est 1871 & son

10 Offices throughout the region dealing with

Property Sales

Valuations

Lettings

Antiques Sale

Valuations

Agricultural Valuations

Professional Advice

Farm Sales

CALL US NOW TO GET A FIRST RATE PERSONAL SERVICE

YORK OFFICE

01904 489731

MALTON OFFICE

01653 692151

or visit our websites

www.stephenson.co.uk

www.boultoncooper.co.uk



BoultonCooper
Stephensons

Bryan Mills Funeral Directors

Life President: Bryan Mills

**PRE-PAID FUNERAL PLANS AVAILABLE
*A PERSONAL CARING SERVICE***

**Modern Hearse and Limousines
Private Chapels
Day and Night Service**

**Millstone Cottage
2 Church Road
Stamford bridge
York YO41 1AA
Tel: 01759 373015**

YOUR HARTON BENEFICE WEBSITE - A REMINDER!



Be sure to check out the *new-look* Harton Benefice website. This is where you can catch up on the latest news, easily find a calendar of services and events and get contact details and links to each of our churches, with information about arranging baptisms, weddings and funerals.

There is a page for the Benefice choir and, of course, you can read *The Circular* on-line – useful if your paper copy has gone missing!

So, bookmark the website address:

www.sandhuttongroup.org.uk

or use the QR code on the opposite page.

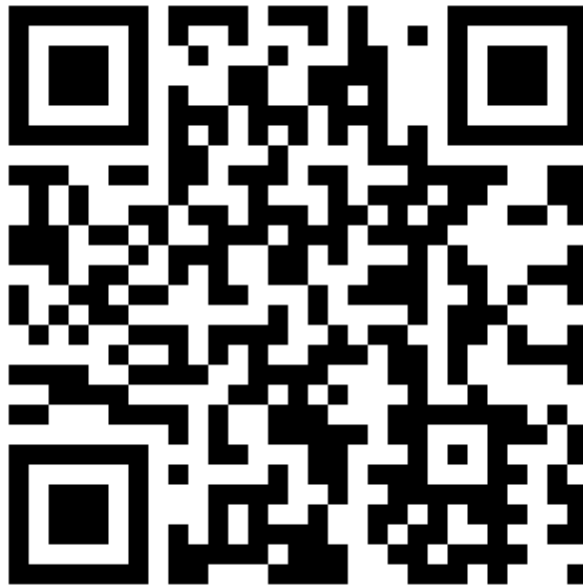
Please contact me if there is something you would like to see on the website. It would be good to include photographs of some of your events – especially if they include people!

Michael Harran: Email: mj@mharran.freeseve.co.uk Tel: 01759 372215

This is the QR code for the Benefice website.

It can be read with a smartphone/tablet that has a QR reader (downloadable free on Android – not sure if Apple charge for it), and an internet connection.

You can use this code to directly access the Benefice website



Win an Easter Egg! The first correctly completed entry opened on Easter Sunday will win the egg. Details on the reverse of the crossword grid.

Benefice Befuddler

By Crypto

**A crossword with an ecclesiastical theme and a local flavour!
Some clues are easy and some a little more tricky.
Good luck!!**

Across

1. Ecclesiastical version of a meter maid? (12)
3. Suppliant (7)
5. In York, a senior politician, but I'm missing (7)
7. Get one of these in school (6)
8. Where church underwear is kept? (6)
9. Is this too much for the vicar to wear? (8)
11. Get water here during May (8)
13. Lots of stamps for example (10)
16. Move ton and thus you will arrive here (4,6)
20. Six vehicles? (6)
23. Primate gets direction (4)
24. How to pack 'em into this church? (6)
25. Does 'e open t'show? (6)
28. Sounds like a lot of musical paper (5)
29. Get South with this handy part for 1 of 150 (5)
31. Dirty drinking vessel? (7,5)
34. These have appeal (5)
36. To be in control of everyone (7)
37. With a smile? That's how we like it (7)
38. Heart or brain say - makes a Great noise (5)

Down

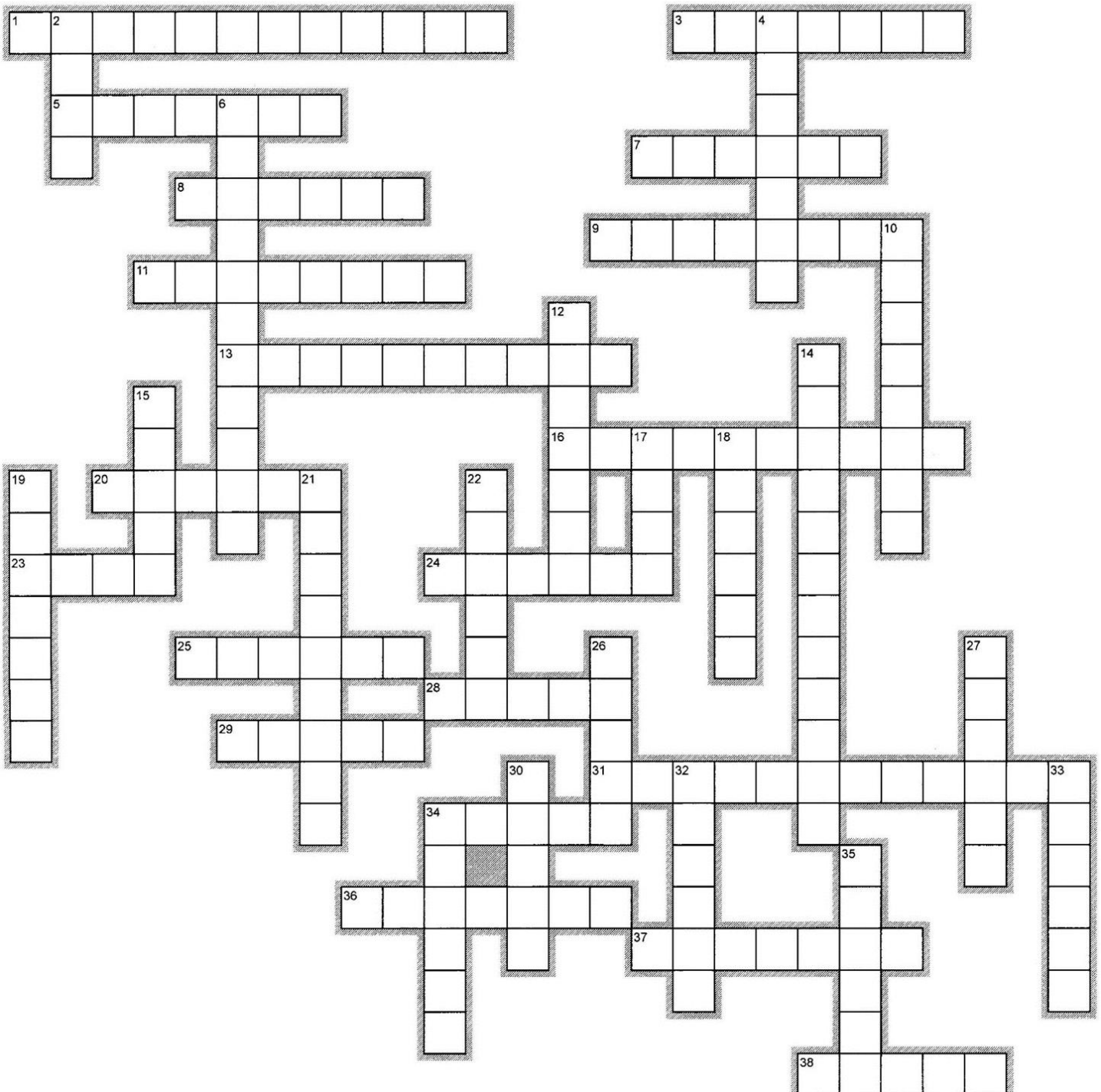
2. Sounds like her partner for singing (4)
4. Internet weapon? Sounds like it! (7)
6. This is it! (3,8)
10. Definitely not an odd ditty (8)
12. Waiter's enquiry about your pigs dinner? (7)
14. Shut this, steer boat from this, Santa has one! (4,8)
15. Without a hope, it points to the sky (5)
17. Tart thief missing king in church (4)
18. Honestly, what your sleeve may have (6)

19. Serendipity comes to an end with Romans 50 (7)
21. What the sought might seek (9)
22. On course, roughly average! (6)
26. Only when you see the green men! (5)
27. Measure of the doctor's success? (6)
30. A bright star - I'm not there - at the East end (5)
32. We sang this together, us (6)
33. Close relative (6)
34. He can't go up and down (or across!) (6)
35. Flatten a hill on Dartmoor? (6)

Benefice Befuddler

Crypto

Eclipse crossword.com



Remove the completed crossword grid page from the magazine and return your entry to either:

Michael Harran
Orchard House
The Lane
Gate Helmsley
YO41 1JT
Tel: 01759 372215

Or

Rachel Baker
Holderness House
Claxton
York
YO60 7JD
Tel: 01904 468809

This must be received **NO LATER THAN MARCH 18th 2016** for inclusion in the competition

Name.....

Address.....

.....

.....

The winner will be announced following the Benefice service on Sunday 27th March 2016

The judges' decision is final.

Contact details for the churches in the Harton Benefice

Bossall, St Botolph

Churchwardens:	Mary Denison	Email: denibossall@gmail.com Tel: 01904 468203
	Kathy Fawcett	Email: carlandkathy@fwi.co.uk Tel: 01904 468355

Buttercrambe, St John the Evangelist

Churchwarden:	Anne Archer	Email: None Tel: 01759 371058
---------------	-------------	----------------------------------

Crambe, St Michael

Churchwarden:	Dorothy Martin	Email: None Tel: 01653 619133
---------------	----------------	----------------------------------

Flaxton, St Lawrence

Churchwardens:	Ida Terry	Email: idmt@hotmail.co.uk Tel: 01347 878432
	Wendy Holman	Email: wendy_e_holman@hotmail.com Tel: 01653 618886

Foston, All Saints

Churchwardens	Karen Armitstead	Email: karen_armitstead@hotmail.com Tel: 01653 619964
	Pam Ashworth	Email: none Tel: 01653 618141

Gate Helmsley, St Mary

Churchwardens	Delyth Harran	Email: mj@mharran.freemove.co.uk Tel: 01759 372215
	Anne Podmore	Email: None Tel: 01759 372320

Howsham, St John

Churchwardens:	Gill Littlejohn	Email: simoncklittlejohn@msn.com Tel: 01653 618846
	Judy Stephenson	Email: jfs@great-barn.co.uk Tel: 01653 618673

Sand Hutton, St Mary

Churchwardens:	Graham Baker	Email: gnrfastline@btinternet.com Tel: 01904 468809
	Ian Lyall	Email: ian.lyall2@gmail.com Tel: 01904 468209
Deputy Warden:	Ellen Stott	Email: ellenstott@yahoo.co.uk Tel: 01904 468404

Upper Helmsley, St Peter

Churchwarden:	Jane Herbert	Email: none Tel: 01759 371310
	Pauline Harrison	Email: harrison859@btinternet.com Tel: 01759 371240

Whitwell on the Hill, St John the Evangelist

Churchwardens:	Janie Bell	Email: janie.bell@me.com Tel: 01653 618
----------------	------------	--

Items for 'The Circular'
Copy deadline for the next edition April 15th 2016

This will cover May June July 2016

**Unfortunately it may not be possible to include
anything received after the deadline.**

Rector of the Benefice of Harton

Revd. Chris Wingfield

01904 468418

Email: chris.wingfield@btinternet.com

Members of the Ministry Team

Parish Sister:	Sister Margaret Ann CSPH	01904 468253
Lay Pastor:	Rachel Baker	01904 468809

**For specific issues to do with occasional offices contact should be
made as follows:**

Funerals	Sister Margaret Ann CSPH	01904 468253
Marriages	Rachel Baker	01904 468809
Baptisms	Delyth Harran	01759 372215

Lay Vice Chairman of the Joint PCC

Delyth Harran 01759 372215

Editor

Fiona Le Masurier

Crambe House, Crambe, York YO60 7JR Tel: 01653 619368

PLEASE NOTE CHANGE TO EDITOR'S EMAIL ADDRESS
from churchmouse@yorlocal.com to churchmouse@crambe.net

Circular Printing Group members

Rachel Baker 01904 468809	Michael Harran 01759 372215
Peter Stott 01904 468404	Fiona Le Masurier 01653 619368

Benefice Website

www.sandhuttongroup.org.uk

